



# More information on our courses 2011

Thames Valley Summer Schools

13 Park Street, Windsor

Berkshire SL4 1LU

**t:** +44 (0) 1753 852001

**f:** +44 (0) 1753 831165

**e:** [english@thamesvalleysummer.co.uk](mailto:english@thamesvalleysummer.co.uk)

[www.thamesvalleysummer.co.uk](http://www.thamesvalleysummer.co.uk)

Click below on the course you're interested in:

Young Learners

[Residential](#)

The information in this section of the website does not form part of any contract between Thames Valley Summer Schools and its clients. This is because the information has been prepared well in advance of courses and inevitably there may be subsequent alterations.

Thames Valley Summer Schools is the trading name of Thames Valley Cultural Centres Limited. Registered in England No. 1169201.

# Young Learners

## Residential Ages 9-17



Click below for:

[Introduction](#)

[Bradfield](#)

[Epsom](#)

[Rugby](#)

[Sevenoaks](#)

[Tonbridge](#)

# Introduction

For over 35 years Thames Valley Summer Schools has specialised in providing a range of language courses for teenagers and Young Adults at the highest standards in education and welfare. The courses are accredited by The British Council.

Each of our Young Learner residential centres has been carefully selected for location and the quality of its facilities, and all offer students ideal surroundings for study and recreation.

The schools are among the most prestigious in England and are located in or close to the centre of safe, attractive towns in beautiful parts of the country. All are within easy reach of London.

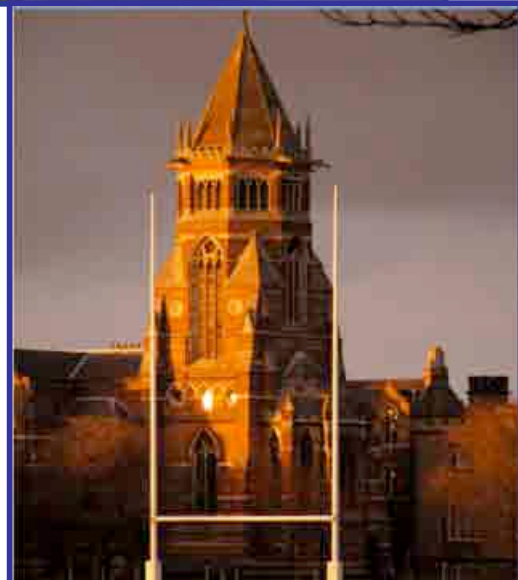
Epsom College



De Vere Centre, Tonbridge School



Sevenoaks School



Rugby School

# Bradfield

Ages 9 - 12 & 13 - 16

Trinity examination course



Scroll down or click here for:

[College description & location](#)

[Address & contact numbers](#)

[Boarding house details & catering](#)

[Excursions](#)

[Course information](#)

## College description & location

[top](#)

Founded in 1850, Bradfield College is one of the UK's leading boarding schools. The college is set in 80 hectares of beautiful countryside, 40 minutes from Heathrow airport and one hour by coach from London. Reading, the nearest town, is 6km away and has a large indoor shopping complex.

Bradfield is conveniently located for excursions to Windsor, Oxford and Brighton. London is visited at least once a week – a special feature of Bradfield is the extended half-day excursions to London which include (depending on course dates) an "Open Top Bus" tour, a flight on the London Eye and a meal at the Hard Rock Café – the world's first Hard Rock restaurant.

All buildings at the college are within a few minutes' walk of each other. Sports facilities include a superb 1300m<sup>2</sup> indoor sports centre and 25m heated indoor swimming pool, indoor and outdoor tennis courts, squash courts and extensive playing fields. Students also have access to a 200m<sup>2</sup> dance studio, art and drama facilities, and the college's ICT suite.



**Clients must not contact the college before the start of courses.**

Thames Valley Summer Schools c/o Bradfield College Bradfield Reading Berkshire RG7 6AE	+44 (0)118 964 + boarding house extension number Office 4500 Stevens 4694 New Close 4664 Stanley 4594
---	---

Students will be accommodated in the above boarding houses, and will be told to phone home as soon as possible after arrival to notify their parents which house they are in.

We recommend that students telephone their parents rather than vice versa. If parents need to phone their son/daughter, the best times to call are 13.30 - 14.00, 17.15 - 18.30 and 19.15 - 19.45.

**Boarding house details & catering**

The college has excellent accommodation comprising single and twin bedrooms, either en suite, or with wash basins and shared bathroom facilities.

New Close and Stevens boarding houses are en suite. There are 56 beds in New Close and 60 in Stevens. Stanley has standard rooms – all rooms have a wash basin, and there are 15 toilets and 17 showers for 51 students/staff. All the boarding houses are within 5 minutes' walk of each other.

All boarding house bedrooms are lockable. Students are required to pay a £25.00 key deposit on arrival, which is returned at the end of the course, on return of the key.

The following fines apply to misuse of facilities: £25.00 for setting off a fire alarm; £120.00 if a smoke alarm is set off. Students who smoke in the boarding house will be fined £100.00.

Stevens boarding house



Students eat in the central dining hall. Meals are self-service, with a three course lunch and three course dinner menu. There is a vegetarian option for all meals. Packed lunches are provided for the full-day excursions and packed dinners for the half-day trips to London. There is an outdoor BBQ on campus each week. *See following page for a sample menu.*

## BRADFIELD SAMPLE WEEKLY MENU

Monday	Tuesday	Wednesday	Thursday	Friday	Saturday	Sunday
Breakfast – Cereals, cut fresh fruit , fruit juices, fresh yoghurt , tea, coffee, pastries and toast and butter:						
Choice of eggs Bacon Pork sausage Baked beans Mushrooms Tomatoes Fried bread French toast Black pudding Hash browns	Choice of eggs Bacon Pork sausage Baked beans Mushrooms Tomatoes Fried bread French toast Black pudding Hash browns	Choice of eggs Bacon Pork sausage Baked beans Mushrooms Tomatoes Fried bread French toast Black pudding Hash browns	Choice of eggs Bacon Pork sausage Baked beans Mushrooms Tomatoes Fried bread French toast Black pudding Hash browns	Choice of eggs Bacon Pork sausage Baked beans Mushrooms Tomatoes Fried bread French toast Black pudding Hash browns	Choice of eggs Bacon Pork sausage Baked beans Mushrooms Tomatoes Fried bread French toast Black pudding Hash browns	Choice of eggs Bacon Pork sausage Baked beans Mushrooms Tomatoes Fried bread French toast Black pudding Hash browns
Lunch – A full non protein salad bar, breads, cut fresh fruit, tea, coffee and water plus homemade soup:						
Gammon steaks with pineapple	Beef chilli with nacho's & four cheese sauce	Turkey stroganoff	Cajun beef / Cajun chicken with flour tortilla wraps, guacamole & sour cream	Tempura battered hake fillet with lemon & tartar	Beef, green pepper and black bean	Roast pork loin
Hong Kong style sweet & sour battered pork with rice	Harrissa Hoki on oven roasted vegetables, salad potatoes with red chard	Chicken and peppers tossed in house dressing with herb croutons & salad	Moules Marinere garlic bread	Beef madras with braised rice	Rocket, avocado & cherry tomato salad with warm lemon prawns	Thai vegetable curry with rice
(V) Stuffed peppers with sweet potato mash & basil topped with goats cheese	(V) Sun blushed tomato & brie fritata with tomato jam	(V) Mushroom stroganoff	(V) Spicy roasted vegetables with flour tortilla wraps, guacamole & sour cream	(V) Cheese & onion pasties	(V) Red pepper, basil, olive & goats cheese calzone	(V) Mushroom, tomato & pesto stack
Pasta with tomato Sauce Jacket potatoes	Pasta with tomato sauce Jacket potatoes	Pasta with tomato sauce Jacket potatoes	Pasta with tomato sauce Jacket potatoes	Pasta with tomato sauce Jacket potatoes	Pasta with tomato sauce Jacket potatoes	Pasta with tomato sauce Jacket potatoes
Roasted peppers	Sweet corn	Braised red cabbage	Garlic button mushrooms	Mushy peas	Oven roasted peppers	Roast potatoes
Minted peas	Kenyan fine beans	Steamed carrots	Petit pois	Grilled tomato with cracked black pepper	Broccoli	Cauliflower cheese
Steamed parsley potatoes	Potato wedges	Rice	Herb diced potatoes	Chips	Vegetable noodles	Braised red cabbage
Chocolate chip sponge & cream	Apple pie & custard	Vanilla & strawberry sponge with chocolate sauce	Fruit cheesecake	Rice pudding with jam sauce	Mixed jelly & ice cream	Peach crumble & cream
Dinner – Homemade soup and bread, a full non protein salad bar, tea, coffee and water, fresh fruit and yoghurt served daily:						
Indian night: mild chicken korma or beef biryani	Pasta carbonara	Chicken & mushroom pie	Mixed paella	Pepperoni pizza	Lasagne & garlic bread	Lemon roasted chicken legs
Cheese & tomato pasta bake	Pepperoni & meatball pasta bake	Tortellini dressed with red pepper pesto	Tomato & basil pasta bake with mozzarella	Ham & pineapple pizza	Pasta tossed in roasted vegetables & sundried tomato	Mushroom ravioli with a basil pesto
Vegetable curry	Vegetable cannelloni	Root vegetable pie	Cheese & sundried tomato quiche	Cheese & tomato pizza	Vegetable lasagne	Quorn sausages with onion gravy
Onion bahjees, samosa, raita	Roast red onion quarters, paprika fried courgettes	Sugar snap peas, sweet corn	Mixed stir fried vegetables	Baked beans, onions, corn	Peas	Green beans, carrots
Rice	Pasta	Mashed potato	Jacket potato halves	French fries	Cajun potato wedges	Roast salad potatoes
Ice creams	Smoothie bar	Eton Mess	Iced ring doughnuts	Milk shakes	Fruit salad	Mixed berry Clafoutie with vanilla sauce



Bradfield College at night



Swimming pool



Main buildings

Indoor tennis centre



Aerial view of the college



## Excursions

[top](#)

There is one full-day and one half-day excursion each week included in fees. All excursions are by coach.

(Inclusive excursions, taken from 2011)

Friday 8/7	H/D LONDON	British Museum <u>or</u> National Gallery and Flight on the London Eye
Sunday 10/7	F/D BATH (including Roman Baths)	
Wednesday 13/7	H/D LONDON	Shopping on Oxford Street and Open Top Bus Tour
Saturday 16/7	F/D BOURNEMOUTH	
Friday 22/7	H/D READING	10 Pin Bowling and Shopping in The Oracle
Sunday 24/7	F/D OXFORD (including Magdalen College)	
Wednesday 27/7	H/D LONDON	Museum of London and Flight on the London Eye
Saturday 30/7	F/D WINDSOR (including Castle)	

(Optional excursions, taken from 2011)

Sunday 17/7	BICESTER VILLAGE (Factory Outlet)
Sunday 31/7	BOURNEMOUTH

Click here for:

[Course information](#)

# Epsom

Ages 10 – 16

[Trinity examination course](#)



Scroll down or click here for:

[College description & location](#)

[Address & contact numbers](#)

[Boarding house details & catering](#)

[Excursions](#)

[Course information](#)

## College description & location

[top](#)

Founded in 1853 under the royal patronage of Prince Albert, Queen Victoria's husband, Epsom College is one of the country's leading co-educational schools, producing more doctors than any other school in the UK. The college is set in extensive landscaped grounds, close to the world-famous Derby Race Course and 15 minutes' walk from the centre of the small, lively town of Epsom.

Epsom is 20 km from central London, with fast and frequent trains to Victoria station (journey time 30 minutes). Heathrow and Gatwick airports are less than 45 minutes by coach.

Recent developments at the college include the multi-million pound Mackinder Building, whose first-class teaching facilities are used by TVSS. Sports facilities are excellent: there is a very large sports centre (opened by Queen Elizabeth II, the school's patron, in 1989) comprising two sports halls, squash courts and a 25m indoor heated swimming pool. There are also 20 tennis courts and extensive sports fields for outdoor games.

TVSS has access to the college's well-equipped computer rooms for computer language activity sessions.

All facilities at the college are within a few minutes' walk of each other.



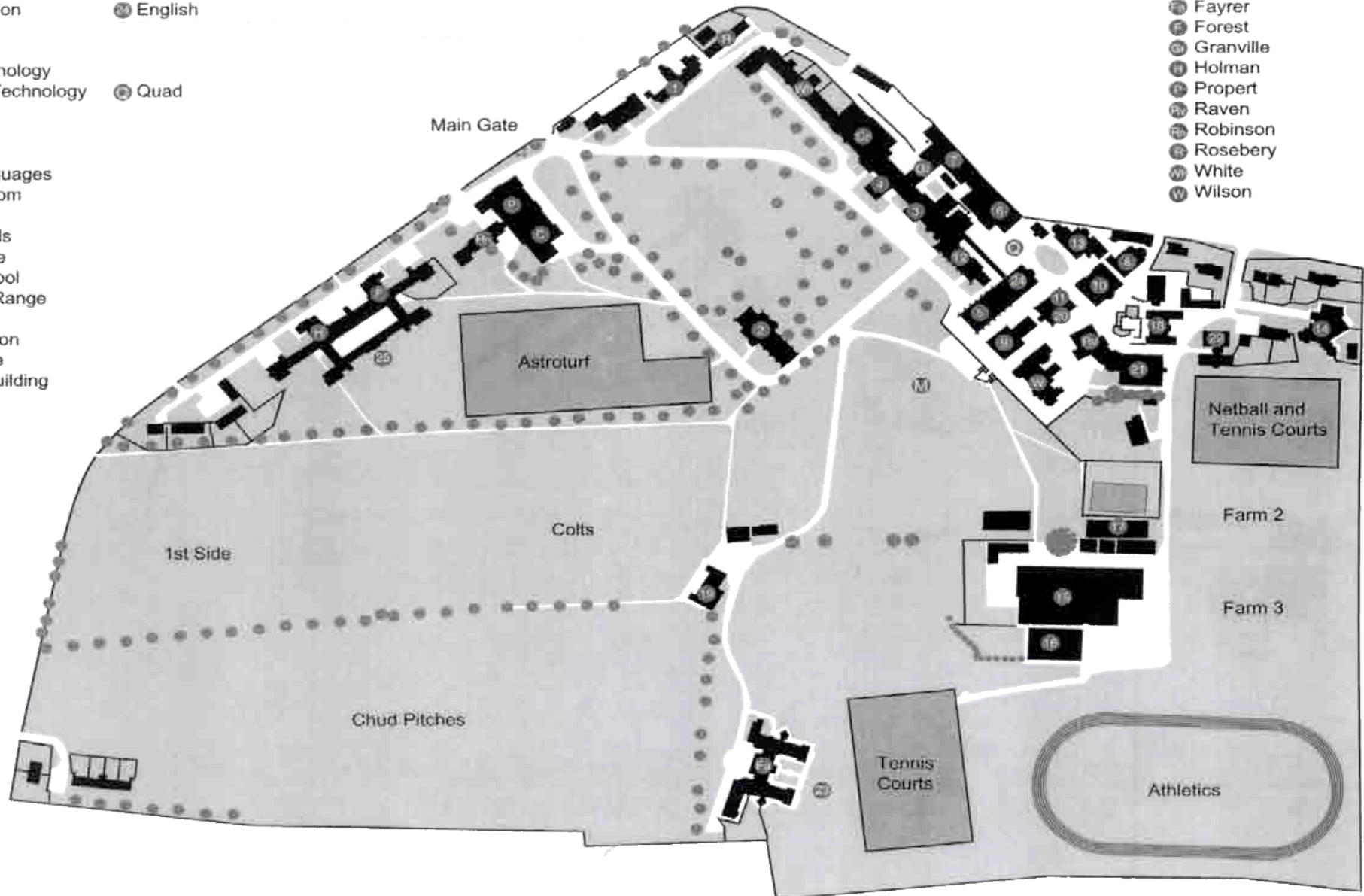
# Plan of boarding houses & main college buildings

- 1 Art Schools
- 2 Chapel
- 3 Main Reception
- 4 Main Hall
- 5 Big School
- 6 Design Technology
- 7 Information Technology
- 8 Biology
- 9 Chemistry
- 10 Physics
- 11 Modern Languages
- 12 Common Room
- 13 Library
- 14 Music Schools
- 15 Sports Centre
- 16 Swimming Pool
- 17 Indoor Rifle Range
- 18 Tuck Shop
- 19 Cricket Pavilion
- 20 College Store
- 21 Mackinder Building

- 22 Maths Block
- 23 150th Anniversary Wildlife Garden
- 24 English
- 25 Quad

Boarding houses:

- 1 Carr
- 2 Crawford
- 3 Fayer
- 4 Forest
- 5 Granville
- 6 Holman
- 7 Propert
- 8 Raven
- 9 Robinson
- 10 Rosebery
- 11 White
- 12 Wilson



**Clients must not contact the college before the start of courses.**

Thames Valley Summer Schools c/o Epsom College College Road Epsom Surrey KT17 4JQ	+44 (0)1372 + boarding house telephone number  Office            821136 Holman          821078 Forest           821057 Wilson           821157 and 821158
--	--

Students will be accommodated in the above boarding houses, and will be told to phone home as soon as possible after arrival to notify their parents which house they are in.

We recommend that students telephone their parents rather than vice versa. If parents need to phone their son/daughter, the best times to call are 13.15 - 14.00, 17.30 - 18.30 and 19.00 - 19.30.

## Boarding house details & catering

Students are accommodated in single or double study bedrooms and mini-dormitories with 3-4 beds. Up to three boarding houses are used by TVSS, depending on student numbers, with 30-60 students in each. All boarding houses are less than five minutes' walk from the college's main buildings.



Students eat in the recently refurbished central dining hall. Meals are self-service, with a three-course lunch and three-course dinner menu. There is a vegetarian option for all meals. Packed lunches are provided for the full-day excursions and packed dinners for the half-day trips to London. There is an outdoor BBQ on campus each week. *See following page for a sample menu.*

Sheets and duvet covers are provided by the college and changed once a week. Common areas and bedrooms are cleaned daily, Monday to Friday. Showers/baths are available to students on the ratio of 1:4 or 1:6, depending on the boarding house.



Main Quad

## EPSOM SAMPLE WEEKLY MENU

Monday	Tuesday	Wednesday	Thursday	Friday	Saturday	Sunday
<b>Breakfast – Cereal bar, fruit juices, yoghurt, and fruit:</b>						
Fruit Juice Cereals Boiled/ fried eggs Baked beans Tinned tomatoes Sausages Yogurt Fruit	Fruit Juice Cereals Boiled/ fried eggs Baked beans Tinned tomatoes Sausages Yogurt Fruit	Fruit Juice Cereals Boiled/ fried eggs Baked beans Tinned tomatoes Sausages Yogurt Fruit	Fruit Juice Cereals Boiled/ fried eggs Baked beans Tinned tomatoes Sausages Yogurt Fruit	Fruit Juice Cereals Boiled/ fried eggs Baked beans Tinned tomatoes Sausages Yogurt Fruit	Fruit Juice Cereals Boiled/ fried eggs Baked beans Tinned tomatoes Sausages Yogurt Fruit	Fruit Juice Cereals Boiled/ fried eggs Baked beans Tinned tomatoes Sausages Yogurt Fruit
<b>Lunch – Hot pasta bar (with choice of 2 sauces) and:</b>						
Salad bar, bread rolls and soup of the day	Salad bar, bread rolls and soup of the day	Salad bar, bread rolls and soup of the day	Salad bar, bread rolls and soup of the day	Salad bar, bread rolls and soup of the day	Salad bar, bread rolls and soup of the day	Bread rolls
Baguette bar Jacket potatoes Assorted toppings	Baguette bar Jacket potatoes Assorted toppings	Baguette bar Jacket potatoes Assorted toppings	Baguette bar Jacket potatoes Assorted toppings	Baguette bar Jacket potatoes Assorted toppings	Baguette bar Jacket potatoes Assorted toppings	Baguette bar Jacket potatoes Assorted toppings
Chicken korma (v) Vegetable korma Rice Onion bhaji/ naan bread Poppodums Broccoli	Roast beef (v) Roast vegetables Yorkshire pudding Roast potatoes Brussel sprouts Sweetcorn/ Gravy	Chicken kiev (v) Vegetable kiev Green beans Baby carrots New potatoes	Shepherds pie (lamb) (v) Vegetable pie Sauté vegetables Cauliflower Croquette potatoes Gravy	Fish (v) Vegetable nuggets Beef & black bean sauce Chips Peas/mushy peas Sweetcorn	Chicken burgers (v) Vegetable burgers Burger buns Mixed salad Potato salad Coleslaw	Chicken & Mushroom Pie Pasta Bar with either: Bolognaise Sauce Carbonara Sauce Vegetarian Sauce
Cheese & biscuits Fresh fruit/yoghurt	Mandarin cheesecake Fresh fruit/yoghurt	Mixed fruit crumble Cream Fresh fruit/yoghurt	Lime jelly Fresh fruit/yoghurt	Pineapple sponge custard	Crème caramel	Gateau Fresh fruit/yoghurt
<b>Dinner – Salad bar and pasta bar, jacket potatoes, soup and rolls and:</b>						
BBQ spare ribs (v) Vegetable spring rolls Onion rings Corn on the cob Sauté potatoes	Salmon & broccoli bake (v) Cheese & onion quiche Broccoli Peas New potatoes	Meatballs in tomato sauce with pasta (v) Vegetable & bean pasta bake Garlic bread Peas/baby carrots	Chicken breast in mushroom sauce (v) Quorn fillet in mushroom sauce Green beans whole Mushroom & pepper stir fry Braised rice	Meat pizza (v) Vegetable pizza Tossed salad Coleslaw Lattice fries	Pasta bake (v) Vegetable pasta bake Broccoli Garlic bread Minted potatoes	Roast pork (v) Roast mixed vegetables Apple sauce/ gravy Roast parsnips/ mixed vegetables Roast potatoes
Flapjack Yoghurt Fresh fruit portion	Topped doughnuts Yoghurt Fresh fruit portion	Banana cake Yoghurt Fresh fruit portions	Artic roll Yoghurt Fresh fruit portions	Raspberry mousse Yoghurt Fresh fruit portions	Yogurt Fresh fruit portion	Ice cream Yoghurt Fresh fruit portions

25 metre heated indoor swimming pool



Mackinder Building classrooms



One of the computer rooms



View of the main school buildings

## Excursions

[Top](#)

There is one full-day and one half-day excursion each week included in fees. Full-day and evening excursions are by coach; half-day excursions to London are by train (Epsom to Victoria station in 30 minutes).

(Inclusive excursions, taken from 2011)

Friday 8/7	H/D LONDON	National Gallery and shopping in Covent Garden	<u>or</u>	National Portrait Gallery and shopping in Covent Garden
Sunday 10/7	F/D OXFORD (including Trinity College)			
Wednesday 13/7	H/D LONDON	Natural History Museum and shopping in Knightsbridge	<u>or</u>	Science Museum and shopping in Knightsbridge (Harrods)
Saturday 16/7	F/D BRIGHTON (including Sea-life Centre)			
Thursday 21/7	H/D LONDON	British Museum and shopping in Oxford Street	<u>or</u>	Museum of London and shopping in Regent Street
Saturday 23/7	F/D CANTERBURY (including Cathedral)			
Wednesday 27/7	H/D LONDON	National Gallery and shopping in Covent Garden	<u>or</u>	National Portrait Gallery and shopping in Covent Garden
Sunday 31/7	F/D GREENWICH (including Royal Observatory and Maritime Museum), tour of central London and shopping in Oxford Street			

(Optional excursions, taken from 2011)

Sunday 17/7	H/D LONDON	"Open Top Bus" tour (£27.00 adults, £12.00 children aged 5-15), excluding transport to London		
-------------	------------	---	--	--

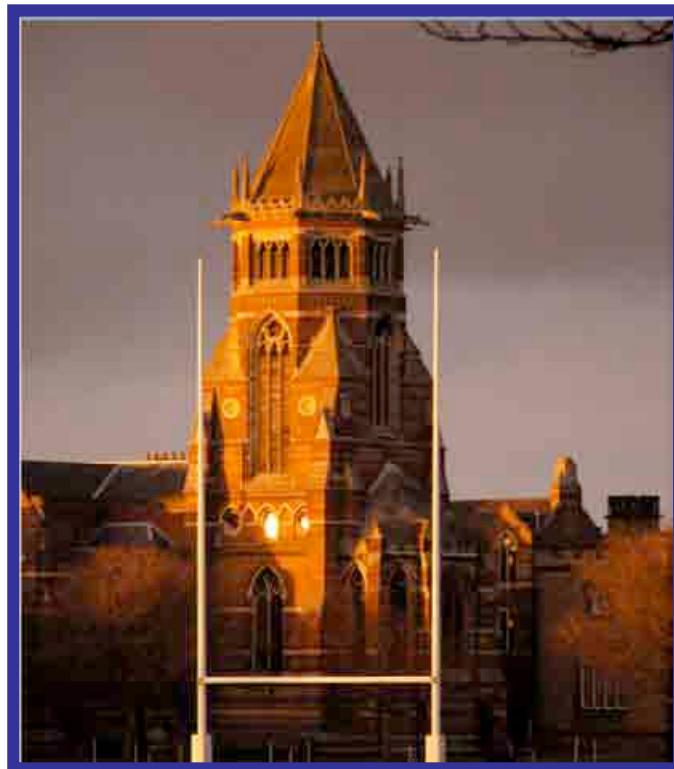
Click here for:

[Course information](#)

# Rugby

Ages 12 - 14 & 15 - 17

[Trinity intensive examination course](#)



Scroll down or click here for:

[School description & location](#)

[Address & contact numbers](#)

[Boarding house details & catering](#)

[Intensive Trinity Course](#)

[Excursions](#)

[Course information](#)

## School description & location

---

[top](#)

Rugby school was founded in 1567 during the reign of Elizabeth I. It is one of the most famous schools in England, where the game of rugby was invented in 1823 when William Web Ellis picked up a soccer ball and ran with it. Students on the course will have the unique opportunity to play the game of rugby on the original pitch.

One of the school's most famous Headmasters was Dr Thomas Arnold (1828-42) who introduced reforms which began the transformation of the harsh environment of schools in England at the time, to the modern private school system of today, recognised as one of the best educational systems in the world. *Tom Brown's Schooldays*, first published in 1857, is a famous story set at Rugby, describing the school's traditions and reforms instituted by Dr Arnold.

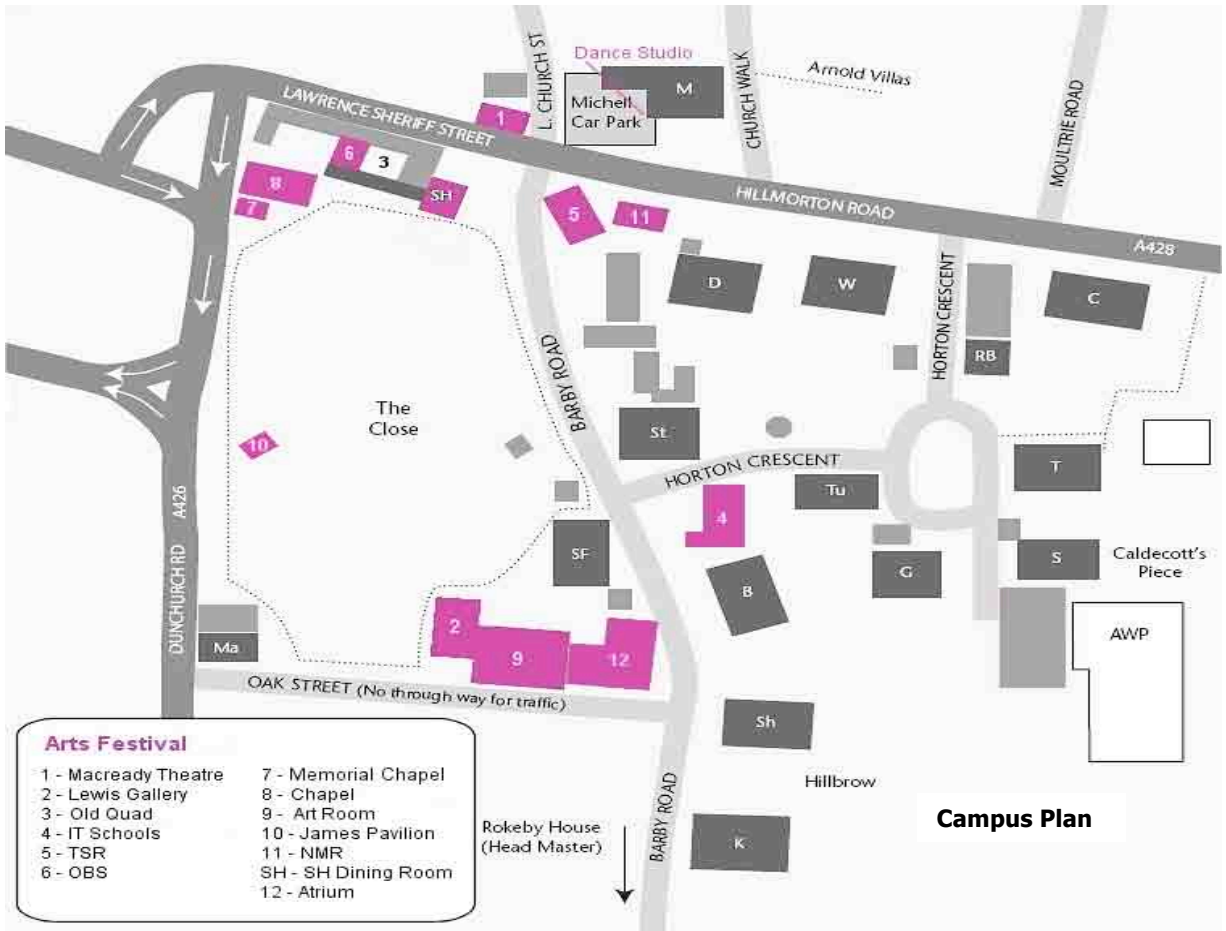
The school is now co-educational with a total of 800 pupils, of which 650 are boarders. Sports facilities at the school include:

- A 25-metre, 6-lane swimming pool.
- A large sports hall for badminton, 5-a-side football, volleyball and basketball.
- Two outdoor all-weather, floodlit, synthetic pitches for soccer, tennis and other sports.
- Three squash courts.
- Ten soccer pitches.
- Four rounders pitches.
- Surrounding land of over 20 hectares.
- The original pitch where rugby was invented. (Rugby is one of the afternoon sports activities available to students.)

Other facilities at the school include an Information Technology Centre with 35 workstations; a Design Centre for art/craft, pottery and photography; a 400 seat theatre used for course Talent Shows; and a Social Centre for discos, karaoke and social events.

The campus is located in the centre of the historic market town of Rugby, which has a population of 87,000. The town is within 35 km of Stratford-upon-Avon, the birthplace of William Shakespeare, Warwick Castle and Birmingham (England's rejuvenated second city). Rugby is 50 minutes by train from central London.





**Clients must not contact the school before the start of courses.**

Thames Valley Summer Schools C/O Rugby School Enterprises The Sports Centre Rugby School Horton Crescent Rugby CV22 5DJ	++44 (0) 1788 with the correct boarding house extension number for your child:  <table> <tr> <td>Kilbracken</td> <td>544284</td> </tr> <tr> <td>Griffin</td> <td>556338</td> </tr> <tr> <td>Rupert Brooke</td> <td>561395</td> </tr> <tr> <td>Stanley</td> <td>TBC</td> </tr> <tr> <td>School House</td> <td>TBC</td> </tr> <tr> <td>Sheriff</td> <td>TBC</td> </tr> </table>	Kilbracken	544284	Griffin	556338	Rupert Brooke	561395	Stanley	TBC	School House	TBC	Sheriff	TBC
Kilbracken	544284												
Griffin	556338												
Rupert Brooke	561395												
Stanley	TBC												
School House	TBC												
Sheriff	TBC												

If parents wish to speak their son/daughter on their mobile phones, the best times to call are 13.15 – 14.00, 17.30 – 18.30 and 19.00 – 19.30. If there is an emergency and the parents are unable to contact their child we ask that they seek to make contact through their agent who has access to emergency mobile phone numbers for staff at the centre.

**Boarding house details & catering**

Accommodation is mostly in single rooms, with some twins available. For younger students, there are larger rooms with 3 – 6 beds. Showers are provided to students on the ratio of 1:4. TVSS uses up to four boarding houses, with 30 – 50 students in each. Boarding houses are less than five minutes’ walk to the school’s main buildings.

Students eat in the centrally located dining hall. Meals are self-service with a 3-course lunch and 3-course dinner menu. There is a vegetarian option for all meals. Packed lunches are provided for the full day excursions and packed dinners for the half day trips. There is an outdoor BBQ on campus each week. See the following page for a sample menu.

Sheets and duvet covers are provided by the school and are changed once a week. Personal laundry is returned within 48 hours. The bedrooms are cleaned daily except at weekends, when only the common areas are cleaned.



The intensive programme at Rugby (30 x 40-minute lessons per week) has been designed for students who want to speed up the improvement in their accuracy and fluency in English, and take the Trinity examination at a more challenging and higher level than would be the case on a standard course. Classes are small, with an average 9, maximum 10, students per class.

In addition to morning classes (25 lessons per week), there are two afternoons of classes, one with three lessons and the other with two. On teaching afternoons, students will have use of a variety of language resources such as DVDs and ICT, as well as speaking activities designed by our in-house team of language experts, to improve oral fluency and accuracy. Recreation activities follow classes on tuition afternoons.

<u>Afternoon A</u>	<u>Lessons 1 &amp;2</u> 14.00 – 15.20	<u>Lesson 3</u> 15.35 – 16.15	<u>Recreation</u> 16.45 – 17.30
<u>Afternoon B</u>	<u>Lessons 1 &amp;2</u> 14.00 – 15.20	<u>Recreation</u> 15.45 – 16.30	<u>Recreation</u> 16.45 – 17.30

On arrival, students are assessed using an oral test and placed in a grade where they have demonstrated some ability in the language expected in the examination for that grade. Trinity examination grades prepared for are 1 – 10 (Common European Framework of Reference for Languages A1 – C1), equivalent to beginner – advanced. Examination certificates are sent 13 weeks after the examination.

## RUGBY SAMPLE WEEKLY MENU

Monday	Tuesday	Wednesday	Thursday	Friday	Saturday	Sunday
Breakfast – Cereal bar, fruit juices, homemade yoghurt, tea and coffee.						
Poached eggs Hot croissants Hash browns Grilled bacon Toast	Fried eggs Grilled bacon Grilled tomatoes Chocolate muffins Toast	Poached eggs Baked beans Cumberland sausage Assorted Danish Toast	Fried eggs Grilled bacon Baked beans Kaiser rolls Toast	Pork sausages Fried eggs Grilled tomatoes Pain au chocolat Toast	Continental Breakfast: Sliced ham Brie and cheddar Wedges Boiled eggs Baguette Toast	Grilled bacon Poached eggs Croissants Toast
Lunch – cut fresh fruits, self serve salad bar with four daily choices and freshly baked bread						
Marinated chicken with vine tomatoes	Plaice goujon with tartar sauce	BBQ style pork and BBQ sauce	<u>Packed Lunch</u>  Selection of freshly made sandwiches including vegetarian  Mars Bar  Apple  Crisps  Mineral Water	Oriental style chicken	Chicken chasseur	<u>Packed Lunch</u>  BLT sandwich <u>or</u> Egg mayonnaise sandwich  Apple, crisps, Kit Kat  Mineral Water
Warm Vegetarian Nicoise Salad	Margherita pizza	Quorn and vegetable stir-fry		Mushroom and beef stroganoff	Blue cheese risotto topped with spinach	
Chunky roasted carrots	Marinated Mediterranean Roasted Vegetables	Panache of vegetables		Roasted courgettes	French beans	
Lyonaise potatoes with red onions	Peas	New potatoes		Steamed noodles	Creamed potatoes	
	Chips					
Homemade Pear Sundae	Homemade Brownie	Blackcurrant cheesecake		Banana cake with lemon frosting	Pear crumble and ice cream	
Dinner – self serve salad bar with four daily choices, fresh fruit bar and freshly bakes bread						
Lamb dansak with onion bhaji	Beef and tomato pasta bake	Roast chicken with sage and onion seasoning	Fish of the day in crispy batter	Lamb Moussaka	Lamb steak and redcurrant sauce	Gammon and pineapple
Cannelloni Bolognese	Chicken burger in a sesame seed bun with sweetcorn relish	Grilled salmon with chive butter	Grilled pork & apple sausages	Pork steak with apricot salsa	Beef burger and bap and tomato relish	Spaghetti with Ragu sauce
Mushroom chow mien	Spanish tortilla	Vegetable lasagne	Stuffed Tomato with spring onion risotto	Pasta with tomato and herb sauce	Veggie burger with relish	Chargrilled vegetable and mozzarella pizza
Green beans	Sweetcorn	Broccoli florets	Mushy Peas Chips	New potatoes	Jacket wedges	Peas
Pilau rice	Baked jacket halves	Roast potatoes		Greek salad		Chips
Choc ice cream with chocolate sauce	Jam Donuts	Creamed rice pudding and fruit compote	Profiteroles with chocolate sauce	Apple pie and custard	Tiramisu	Jelly and ice cream

There is one full-day and one half-day excursion each week included in fees. Full-day and evening excursions are by coach; full-day excursions to London are by train (Rugby to Euston station 50 minutes).

(Inclusive excursions, taken from 2011)

Sunday 17/7	F/D LONDON Open Top Bus Tour and shopping on Oxford Street	
Tuesday 19/7	H/D	STRATFORD UPON AVON (including visit to Shakespeare's Birthplace)
Thursday 21/7	H/D	BLLENHEIM PALACE (late return, dinner 19.30)
Saturday 23/7	F/D CAMBRIDGE (including Clare College)	
Thursday 28/7	H/D	WARWICK CASTLE
Saturday 30/7	F/D LONDON British Museum, shopping in Covent Garden and flight on the London Eye (late return, dinner 20.00)	
Thursday 4/8	H/D	COVENTRY (including Cathedral) plus Ten Pin Bowling
Sunday 7/8	F/D BIRMINGHAM (including Sea-life Centre)	

(Optional excursions, taken from 2011)

Sunday 24/7	BIRMINGHAM (by rail)
Sunday 31/7	Bicester Retail Park (by coach)

Click here for:

[Course information](#)

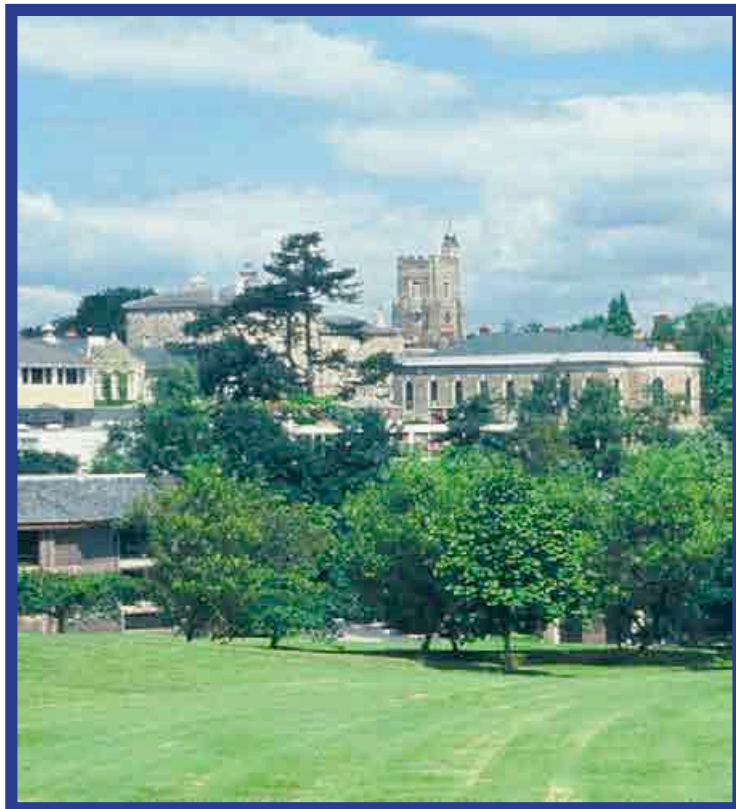


Thames Valley  
SUMMER SCHOOLS

# Sevenoaks

Ages 13 - 17

[Trinity examination course](#)



Scroll down or click here for:

[School description & location](#)

[Address & contact numbers](#)

[Boarding house details & catering](#)

[Excursions](#)

[Course information](#)

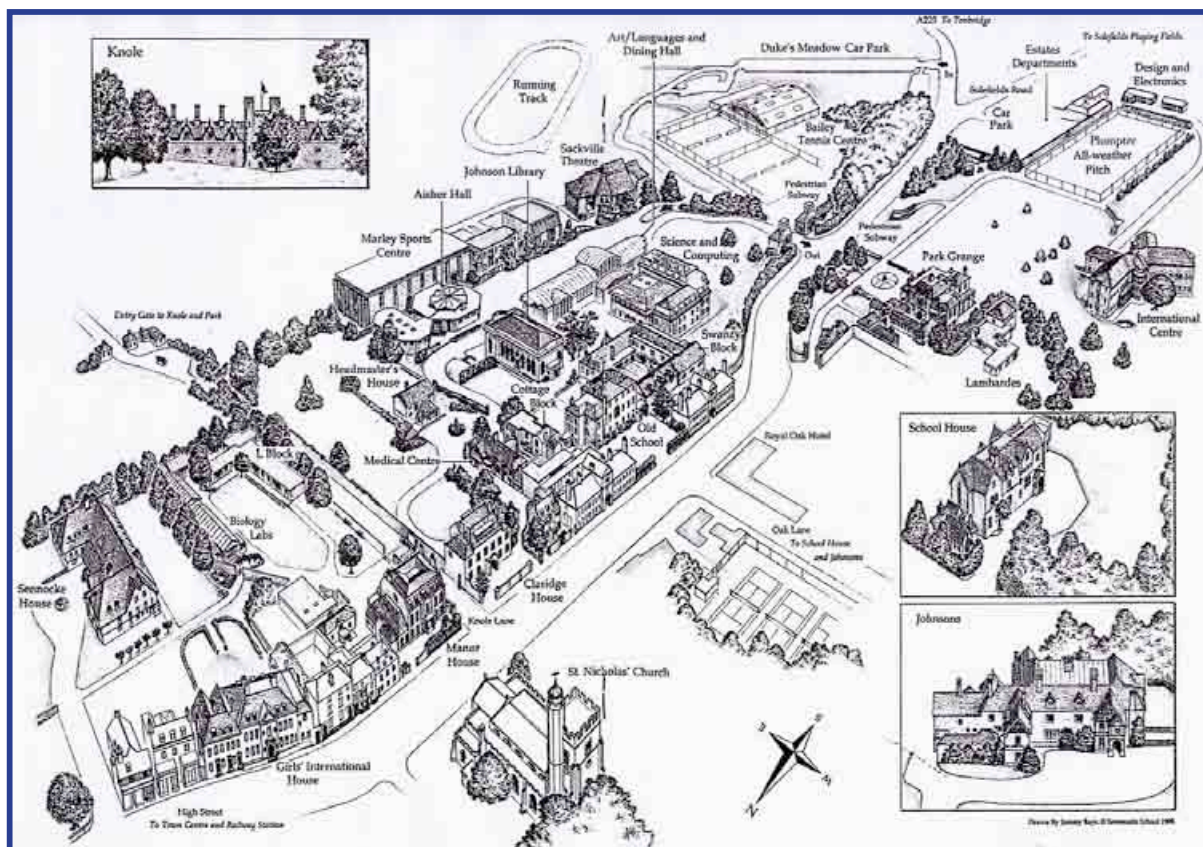
## School description & location

[top](#)

Sevenoaks School was founded in 1432 and is one of the oldest schools in England. It is situated in pleasant parkland, five minutes' walk from the lively, small town of Sevenoaks. Sevenoaks is only 30 minutes from central London by train (Charing Cross station). Brighton is one hour away by coach.

Facilities at the school are of the highest standard, including a multi-million pound centrally located dining hall and classroom complex opened in 2001, and an eight million pound Sports Centre. Students have access to the eight court multi-purpose Sports Hall for volleyball, basketball, 5-a-side football and badminton, a 25 metre indoor heated swimming pool, and three squash courts. All-weather tennis courts and extensive games fields are also available. Discos, karaoke and the talent shows are held in the multi-purpose Sackville Theatre. There are excellent art facilities and TVSS also has access to the school's computer rooms. There is also a fantastic new £13 million Creative Arts complex which was completed earlier this year.

One feature of the campus is the beautiful landscaped gardens, which are at their most attractive in the summer.



**Clients must not contact the school before the start of courses.**

Thames Valley Summer Schools c/o Claridge House Sevenoaks School High Street Sevenoaks Kent TN13 1HU	+44 (0)1732 + boarding house telephone number	
	GIH	455421
	GIH Annexe	457477
	International Centre	452811
	Johnsons	460820
	Lambardes	455900
	Park Grange	457054
	School House	454396
	Sennocke House	457659

Students will be accommodated in the above boarding houses, and will be told to phone home as soon as possible after arrival to notify their parents which house they are in.

We recommend that students telephone their parents rather than vice versa. If parents need to phone their son/daughter, the best times to call are 13.15 - 14.00, 17.30 - 18.30 and 19.00 - 19.30.

**Boarding house details & catering**

Students are accommodated in single or double study bedrooms and mini-dormitories with 3-5 beds. Up to six boarding houses are used by TVSS, depending on student numbers, with 40-55 students in each (except GIH Annexe – 20 beds). GIH, Park Grange and Sennocke are less than five minutes' walk from the school's main buildings. The International Centre, School House and Johnsons are 10-15 minutes' walk away.

Students eat in the centrally located dining hall, opened in 2001. Meals are self-service, with a three course lunch and three course dinner menu. There is a vegetarian option for all meals. Packed lunches are provided for the full-day excursions and packed dinners for the half-day trips to London. There is an outdoor BBQ on campus each week. *See following page for a sample menu.*



Interior dining hall

Sheets and duvet covers are provided by the school and changed once a week. The rooms are cleaned daily except at weekends, when only the common areas are cleaned. Showers/baths are available to students on the ratio of 1:4 or 1:6, depending on the residence.



## SEVENOAKS SAMPLE WEEKLY MENU

Monday	Tuesday	Wednesday	Thursday	Friday	Saturday	Sunday
<b>Breakfast</b>						
Scrambled eggs Grilled bacon Hash browns Baked beans Croissants Toast	Fried eggs Grilled bacon Grilled tomatoes Toast Pain au chocolat	Poached eggs Pork sausages Baked beans Hash browns Croissants Toast	Fried eggs Grilled bacon Baked beans Wedges Pain au chocolat Toast	Pork sausages Fried eggs Grilled tomatoes Hash browns Danish pastries Toast	Sliced gammon Hash brown potatoes Grilled tomatoes Poached eggs Blueberry muffin Toast	Continental breakfast: Sliced meats and cheeses Boiled eggs Kaiser rolls Toast
<b>Lunch</b>						
Pork Cassoulet with pimento and chick peas	Haddock steak with crunchy pesto topping	Chicken Supreme with garlic and herb butter	Fettuccine with spinach and ricotta	Grilled salmon and butte basil sauce	<u>Packed lunch:</u>  Ham and tomato  Egg mayonnaise  Belgian bun  Crisps and water  Apple and Twix	Spaghetti Bolognese
Cannelloni and Carbonara sauce	Pizza spicy hot one	Fish goujons with stir fried vegetables	Fried pork steak with mushroom sauce	Pasta Carbonara		Roast pork with stuffing
Mushroom and spinach risotto	Margarita pizza	Roasted vegetables with grilled goats cheese	Bean and parmesan risotto	Pasta with watercress pesto		Spinach and ricotta cannelloni
Peas	Green beans	Sweetcorn	Roasted carrots	Roasted courgettes		Peas
Mashed potatoes	Chips New potatoes	Pilaf of rice saute	Jacket potatoes	Jacket halves baked new		New potatoes
Chocolate Fudge Brownie	Tiramisu	Blackcurrant jelly with ice cream	Cornflake and raisin crispies	Jam doughnuts		Rhubarb crumble and custard
<b>Dinner</b>						
BBQ	Beef taco with grated cheese and shredded lettuce	<u>Packed supper:</u>  Chicken and sweetcorn sandwich  Cheese and tomato sandwich  Chocolate muffin  Apple  Crisps and water	Chicken Supreme with basil cream sauce	Lamb casserole with Cumberland sauce	BBQ	Roquette and goats cheese pizza
Pork sausage hot dogs	Turkey burger escalope with puttenesca sauce		Lamb and rosemary risotto	Beef cannelloni	BBQ chicken	Chicken nicoise
Chicken burger with bap and sweetcorn relish	Toasted brioche with garlic mushroom sauté`		Macaroni sauce	Cannelloni Verdi	Sausage and roll	Pizza Margherita
Quorn sausage hot dog	Peas		Saute of leek mushroom and red onion	Grilled tomato with herbs	Veggie burger and relish	Chips
Pasta salad	Parmentier pots		Saute potatoes	Oven baked wedges	Tomato and red onion salad	Peas
Tossed salad	Orange sponge and custard		Vanilla ice cream with chocolate sauce	Pear crumble and ice cream		Carrot cake with lemon icing
Strawberry and vanilla splits						



Park Grange boarding house



Aerial view of school



Main quad



Interior central dining hall



Johnsons boarding house

## Excursions

[top](#)

There is one full-day and one half-day excursion each week included in fees. Full-day and evening excursions are by coach; half-day excursions to London are by train (Sevenoaks to Charing Cross station 30 minutes).

(Inclusive excursions, taken from 2011)

Thursday 7/7	H/D LONDON	British Museum and shopping on Oxford Street	or	Museum of London and shopping in One New Change, St Paul's
Sunday 10/7	F/D BRIGHTON (including Sea Life centre)			
Wednesday 13/7	H/D LONDON	National Gallery & shopping in Covent Garden	or	National Portrait Gallery & shopping in Covent Garden
Saturday 16/7	F/D OXFORD (including Trinity College)			
Thursday 21/7	H/D LONDON	Science Museum & Shopping in Knightsbridge	or	Natural History Museum & Shopping in Knightsbridge
Saturday 23/7	F/D CANTERBURY (including Cathedral)			
Wednesday 27/7	H/D LONDON	British Museum and shopping on Regent Street		
Sunday 31/7	F/D GREENWICH (including Royal Observatory and Maritime Museum), mini-tour of central London and shopping in Oxford Street			
Wednesday 3/8	H/D LONDON	National Gallery and shopping in Covent Garden	or	National Portrait Gallery and shopping in Covent Garden
Sunday 7/8	F/D BRIGHTON (including Sea Life Centre)			

(Optional excursions, taken from 2011)

Sunday 17/7	H/D LONDON	"Open Top Bus" tour (£27.00 adults, £12.00 children aged 5-15), excluding transport to London
-------------	------------	---

Click here for:

[Course information](#)

# Residential Course Information

Scroll down or click here for:
<a href="#">Arrival &amp; departure details</a>
<a href="#">Staff structure</a>
<a href="#">Accommodation &amp; welfare</a>
<a href="#">Sample daily timetables</a>
<a href="#">Study programme</a>
<a href="#">Recreation programme</a>
<a href="#">Things to bring</a>
<a href="#">Rules</a>



## Arrival & departure details

[top](#)

Students are met at London Heathrow airport by Thames Valley Summer School (TVSS) staff on published course transfer dates and are taken by private coach to their course centre.

At the end of the course, students are taken back to Heathrow and escorted safely through check-in procedure. Arrival and departure times of TVSS scheduled coaches are detailed below:

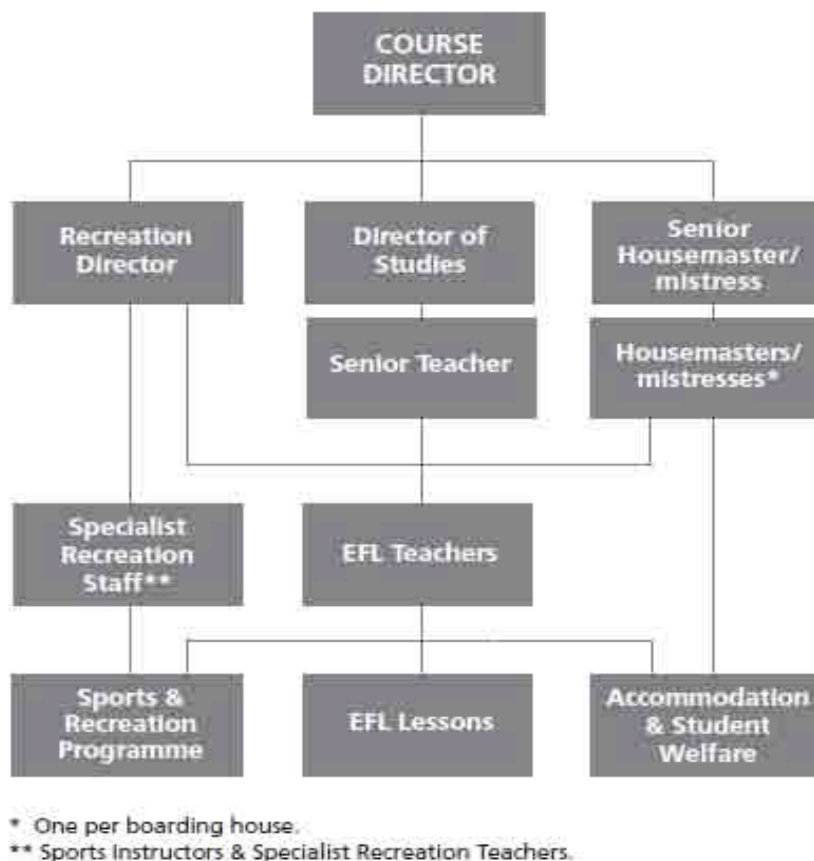
### Scheduled transfer times

Arrival days	Departure days
Depart Heathrow 12.30	Arrive Heathrow 08.30
Depart Heathrow 16.00	Arrive Heathrow 12.00
Depart Heathrow 19.30	Arrive Heathrow 15.30

Scheduled transfer charges for individuals are £45.00 each way. Transfers at other times or from other airports can be arranged at an additional cost. Airport meals are not provided.

In overall charge of each centre is a Course Director, whose job it is to ensure the successful management of the course. He/she works with other senior staff comprising Housemasters/mistresses responsible for accommodation arrangements, a Recreation Director and a Director of Studies who has responsibility for the academic programme.

EFL teachers are appointed on the basis of one teacher per 13-14 students, maximum 15. The combined staff to student ratio is 1:6, including sports instructors and specialist recreation staff who are involved in the recreation programme.



## Accommodation & welfare

Students are accommodated in boarding houses; typically each boarding house accommodates 40-50 students, and bedrooms are either single, double or mini-dormitories with 3-5 beds. Although TVSS endeavours to respond to particular accommodation requests (which must be stated at registration) there is no guarantee that any such request can be fulfilled. *Variations on bed numbers in rooms are listed under "Boarding house details & catering" for each centre.*

Each boarding house is supervised by an experienced Housemaster or Housemistress who is responsible for the safety and welfare of the students in their residence. Teachers also live in the boarding houses.

Full board accommodation includes English breakfast (continental breakfast on Sundays), lunch and dinner, with a good choice of menu. There is an outdoor BBQ each week, and packed lunches or dinners are provided on excursion days. Birthday cakes can be provided at extra cost. *Sample menus are listed under "Boarding house details and catering" for each centre.*

Students without National Leaders are advised to deposit passports, airline tickets and pocket money with their Housemaster/Housemistress for safe-keeping. The same safe-keeping facility is

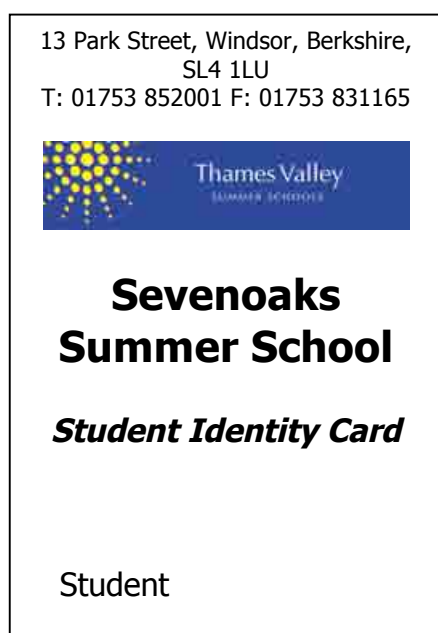
available for students with National Leaders - Leaders act as intermediaries in processing pocket money requests.

Fire regulations are displayed in each boarding house and students are shown where the fire extinguishers and emergency exits are located. Fire drills take place within 48 hours of each student intake.

Personal laundry is collected once a week and returned within 48 hours, except for jeans which take seven days. Heavy items of clothing such as jerseys and coats have to be taken to specialist cleaners at students' expense. Students must have all clothing clearly marked with their names. Bed linen is changed weekly.

Students are issued with an Identity Card, which must be carried at all times. The card shows the TVSS emergency mobile telephone for the centre.

### Sample Identity Card



Any relevant medical conditions or food/medicinal allergies must be advised on registration. We recommend that students take out insurance for travel cancellation, accident, illness, loss of personal property and damage to third party property.

Students who need medical attention during their course will be accompanied by a member of staff to the school doctor's surgery or, if necessary, the Accident and Emergency department of the nearest hospital.

Trinity Examination course	
08.00	Breakfast
08.45	Morning meeting
09.05	Lessons 1 to 3
11.05	Break
11.30	Lessons 4 and 5
12.50	Lessons end
13.00	Lunch
14.15 - 15.00 15.15 - 16.00 16.15 - 17.00	Organised sports and recreation activities
18.30	Dinner
19.30	Evening social programme begins
22.00 - 22.45	Bedtime depending on age
22.45 - 23.30	Lights out

Please see the section for Rugby for details of the intensive afternoon classes.

## Study programme

### ***Trinity Examination course***

The course is designed to prepare students to take the Trinity College Graded Examinations in Spoken English. Our syllabus aims to enable students to activate the language they have studied and gain formal recognition for their oral skills. The examination itself provides a reliable and valid scheme of assessment through which candidates, teachers and parents may measure progress and development, whether for educational and vocational purposes or as a leisure activity.

Trinity College London has been setting standards and testing English language for more than 50 years. Trinity examinations are recognised worldwide and are accredited by the Qualifications and Curriculum Authority in the UK. They are also aligned with the Common European Framework of Reference for Languages (CEFR) A1-C1.

On the first day of the course, students' speaking ability is assessed in a short interview to ensure that each student is placed in the correct class level. Teachers monitor students during the first few days of the course to identify any individual whose test results may not have correctly reflected their level.

The syllabus is based on the requirements of the syllabus for the Trinity Examinations in Spoken English. TVSS prepares students for Trinity examination grades 1 – 8 at Bradfield and Epsom, equivalent to beginner – upper-intermediate. At Rugby and Tonbridge they are prepared for grades 1-10, equivalent to beginner – advanced. On the basis of their placement tests, students will study for an examination at the appropriate grade for their level of English.

The study programme comprises 25 lessons per week. Classes are divided into five lessons per day, each made up of 40 minutes. The first three lessons focus on conversational and interactive language tasks, using carefully selected textbooks. These are provided on loan for the period of the course. There is a 25 minute break after lesson 3.

In lessons 4 and 5, the emphasis is on topic-based discussion, excursion preparation and feedback. At Rugby, in addition to morning classes, students have lessons on two afternoons a week. The extra

lessons are designed to speed up the accuracy and fluency of students' English so that they can take the Trinity examination at a higher and more challenging level.

An activity book designed by TVSS specifically for the course is provided to students and is included in fees.

Students may study on a two, three or four week programme taking the Trinity examination at the end of their course. Students' progress is regularly monitored by their teacher, senior teacher and Director of Studies.

## Recreation programme

---

[top](#)

A balanced programme of recreational activities is organised for students seven days a week. All programmed activities are supervised and student attendance is compulsory. *See following page for a sample recreation programme.*

### ***Afternoons on campus***

Students can plan their own afternoon programme from the variety of sports and creative activities available each day. Sports include volleyball, tennis, badminton, basketball, squash, table-tennis, football, softball and swimming. In all centres there are also excellent facilities for art and crafts, aerobics and other creative skills.

### ***Evenings***

Many afternoon activities interact with the evening social events. For example, students may be involved with designing posters for the weekly discos or helping to produce costumes for a themed BBQ. Other evening events include karaoke, talent shows, language quizzes, competitions and videos.

### ***Excursions***

There is one full-day and one half-day excursion each week included in fees. Full-day excursions are by coach and are usually on Saturdays. Half-day excursions to London are either by coach or train, and usually offer a choice of destinations. The TVSS Activity Book includes language-based material for excursion preparation.

## SAMPLE WEEKLY RECREATION PROGRAMME

(Taken from Tonbridge 2011)

Time	Monday	Tuesday	Wednesday	Thursday	Friday	Saturday	Sunday
09.05 – 12.50	Classes	Classes	Classes	Classes	Classes		Free
14.15 – 15.00	Squash	Art/Craft	Computers	Half-day excursion  LONDON	Computers	Full-day excursion  OXFORD	Organised activities on campus  <u>or</u>  Optional half-day excursion
	Computer	Table-tennis	Football		Volleyball		
	Basketball	Football	Tennis		Art/Craft		
	Tennis	Basketball	Volleyball		Badminton		
15.15 -16.00	Badminton	Tennis	Squash		Computers		
	Squash	Art/Craft	Squash		Aerobics		
	Tennis	Football	Basketball		Basketball		
	Computers	Volleyball	Tennis		Volleyball		
16.15 –17.00	Photography	Squash	Computers		Computers		
	Swimming	Computers	Art/Craft		Swimming		
	Tennis	Swimming	Swimming		Art/Craft		
	Volleyball	Badminton	Aerobics		Basketball		
Evening	Bingo	Karaoke	Sports Competitions (finals)	Film Night	Disco	BBQ	Talent Show

\* Includes mid-morning break 11.05 -11.25. There will be Saturday classes in weeks 1 and 3; full-day excursions these weeks are on Sunday.

In the third afternoon recreation period there is a "Quiet Session" option. Students can use this time to relax in a supervised environment. Sessions are included in the afternoon recreation programme for supervised visits into Epsom, Rugby, Sevenoaks and Tonbridge.

## Things to bring

---

[top](#)

This list should not be regarded as comprehensive, but simply as a number of items which must not be forgotten:

- Sufficient personal clothing to last at least a week (including warm clothing and raincoat in case of bad weather)
- Sportswear including tracksuit and jersey
- Tennis racket (if intending to play tennis)
- Trainers and/or tennis shoes with *non-marking soles*
- Towels for both swimming and bath/shower use
- Swimsuit
- Personal items e.g. toothbrush, hairbrush, hairdryer
- Electrical adaptor/converter for UK voltage (240 volts)

Students should bring sufficient pocket money (£75.00 per week is suggested) for spending on optional excursions, presents, clothes etc. We recommend that students deposit money and other valuables with their National Leader for safe-keeping or, if they do not have a National Leader, with their Housemaster/mistress. Students should not carry large sums of money (more than £25.00) or leave money/valuables in their bedroom. No responsibility can be accepted by Thames Valley Summer Schools for losses resulting from ignoring this advice.

## Rules

---

[top](#)

Students are given full details of course guidelines in writing when they arrive. These include the following rules:

- Attendance at English classes and recreation activities is compulsory.
- Students are not permitted to leave town unless accompanied by a member of staff or National Leader.
- Students are required to follow procedures when leaving the campus.
- Halls of residence will be locked at 22.45 and students must return by 22.00 or 22.30, depending on their age. Students are not allowed into bedrooms of the opposite sex.
- No food or drink is permitted in bedrooms. Alcoholic drinks are not allowed on school premises. It is illegal in the UK for people under 18 to buy or consume alcohol.
- No smoking is permitted on campus except in designated areas. It is illegal in the UK for people under 18 to buy or smoke cigarettes.
- Students using drugs for any purpose except medicinal will automatically be expelled from the course.
- No entry to the swimming pool is permitted except in the presence of a qualified lifeguard.
- Students whose behaviour is unreasonable will be given a formal warning by the Course Director; if there is no improvement their parents will be advised. In the event of serious misconduct or continuous bad behaviour, students will be sent home at their parents' expense.
- Students are responsible for any damage or injury they cause to property or third parties.

## Complaints

---

[top](#)

Students are encouraged to advise TVSS staff immediately if they have a problem or complaint, as it is difficult for TVSS to remedy the situation once a student has returned home.

## Western Union Instructions

---

**Neither TVSS nor host families are able to lend students money. If parents wish to send money to students they can do so via Western Union office locations mentioned below.**

Students need to take the following to the Western Union branch when collecting money.

Photo ID (passport, ID Card)

Name of person sending money (exact name or agent name)

The exact amount that has been sent

The location from which the money has been sent

Once at the branch they will need to fill in a form with the above information.

Below are the addresses, telephone numbers & opening hours for Western Union Branches / Agents.

---

<b>THOMSON</b> 26 High Street <b>EPSOM</b> , SURREY, KT19 8AH UK Tel. 0800 833833 (TOLLFREE in UK only)	<b>Mon-Fri:</b> 09.00 – 17.30 <b>Sat:</b> 09.00 – 17.30 <b>Sun:</b> CLOSED
---	--

---

<b>ALISHA FOOD AND WINE</b> 46 DORSET STREET <b>LONDON</b> , W1U 7NB UK Tel. 0800 6122124 (TOLLFREE in UK only)	<b>Mon- Fri:</b> 08.30 – 21.30 <b>Sat:</b> 08.30 – 20.30 <b>Sun:</b> 09.00 – 19.30
---	--

---

<b>CALCOT NEWSAGENT</b> ROYAL AVE <b>READING</b> , BERKS, RG31 4UP UK Tel. 0800 9700258 (TOLLFREE in UK only)	<b>Mon- Sun:</b> 05.30 – 20.00
---	--------------------------------

---

<b>THE CO OPERATIVE TRAVEL</b> 9 Church Street <b>RUGBY</b> , CV21 3PH UK Tel. 0800 833833 (TOLLFREE in UK only)	<b>Mon-Sat:</b> 09.00 – 17.00 <b>Sun:</b> 09.00 – 17.00
--	--

---

<b>HIGH STREET NEWS</b> 97/13 HIGH STREET <b>SEVENOAKS</b> , KENT TN13 1LH UK Tel. 0800 833833 (TOLLFREE in UK only)	<b>Mon- Sat:</b> 07.00 – 19.00 <b>Sun:</b> 07.00 – 14.00
--	---

---

<b>THE CO OPERATIVE TRAVEL</b> 24 HIGH STREET <b>TONBRIDGE</b> , KENT, TN9 1EJ UK Tel. 0800 833833 (TOLLFREE in UK only)	<b>Mon-Sat:</b> 09.00-17.00 <b>Sun:</b> CLOSED
--	---

---